

# Casgliad y Werin Cymru

[www.casgliadywerincymru.co.uk](http://www.casgliadywerincymru.co.uk)

# People's Collection Wales

[www.peoplescollectionwales.co.uk](http://www.peoplescollectionwales.co.uk)

Graham Davies

Digital Programmes Manager,  
Amgueddfa Cymru – National Museum Wales



Casgliad y Werin Cymru  
People's Collection Wales



CONTRIBUTE  
add your content

DISCOVER  
search, find, explore

LOCATE  
use maps to search



## Discover

Looking for something in particular? Doing some research? Not sure where to start? Use our Discover tool to search the site and find what you need and lots of other treasures!

Image: Proud Valley

What will you discover? >

## People's Collection Wales

...is a website full of fascinating photographs, sound recordings, documents, videos and stories about the history and heritage of Wales and its people - it is the first of its kind in Wales.

Create an account  
to enjoy more from  
People's Collection  
Wales

SIGN IN & CONTRIBUTE

Take a moment to register  
and you can:

- Create your profile page;
- Save items;
- and more...

SIGN IN & DISCOVER

## What's popular on People's Collection Wales



Bakestone



[The sands, Rhyl, Wales] (LOC)



The Parade, Llandudno, 1870s



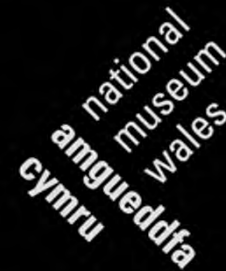
[On the beach, Llandudno, Wales] (LOC)



ABERYSTWYTH CASTLE

# Main partners

Amgueddfa Cymru –  
National Museum Wales



National Library of Wales



Royal Commission on the Ancient and  
Historic Monuments of Wales





CONTRIBUTE  
add your content

DISCOVER  
search, find, explore

LOCATE  
use maps to search



You are here: [Home](#) / [Promissory note, Rhayader Bank, 1811](#)

## Promissory note, Rhayader Bank, 1811



[View map](#)



Comment



Add to favourites



Share



Description

Comments (0)

A one pound promissory note issued by the Rhayader Bank in January 1811.

<http://www.gtj.org.uk/en/small/item/GTJ61693>

## Related Items



## Uploaded by



Casglu'r Tlysau...

Date joined:  
24/07/2009

Follow

Item uploaded: 17/02/2010

This item also appears in

[Bank notes and coinage of Wales](#)

[Old Banknotes](#)

## TAGS

Banks / Economy / Finance

Banking

Bank notes

Promissory notes

206

VIEWS

0

FAVOURITES

2

SHARES

0

COMMENTS

COPYRIGHT DETAILS  
© Llanidloes Museum 2014

LICENCE INFORMATION  
Reproduced by permission of Llanidloes Museum  
All Rights Reserved.





CONTRIBUTE  
add your content

DISCOVER  
search, find, explore

LOCATE  
use maps to search



You are here: [Home](#) / [Dr Williams School OGA](#)



### Dr Williams School OGA

Date joined: 23/05/14

Follow

11

LIVE ITEMS

26

FAVOURITES

0

FOLLOWERS

#### Description:

Dr Williams' School, Dolgellau first opened its doors to pupils in 1878 and was a pioneer of secondary education for girls in Wales. The school closed in 1975, just short of its centenary.

"Still Ardua Semper - Sharing Stories of Dr Williams' School, Dolgellau 1878-1975" is an Old Girls Association project in partnership with the University of Aberystwyth and the Dolgellau Record Office and supported by the Heritage Lottery Fund. The project is to catalogue the archives at the Record Office and to create a new interactive website for old girls to upload their stories and items.

The new website is currently in preparation and will be launched in September.

Website: <http://www.dwsoga.org.uk>

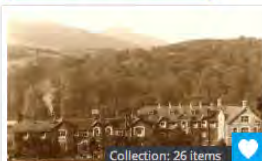
Refine results by keyword



Order by

Content

Dr Williams School OGA x



Collection: 26 items

Dr Williams' School, Dolgellau

By  
Dr Williams Sch...



Dr Williams School Photo 1910-11

By  
Dr Williams Sch...



Dr Williams School Reunion at  
10 Downing Street

By  
Dr Williams Sch...



Dr Williams's School,  
Dolgellau croquet game

By  
Dr Williams Sch...



Dr Williams' School, Dolgellau

By  
Dr Williams Sch...



CONTRIBUTE  
add your content

DISCOVER  
search, find, explore

LOCATE  
use maps to search



You are here : [Home](#) / [Graham Davies](#)

My Profile

Contribute

Published Items

My Favourites

Contributors I Follow



Graham Davies

Date joined: 15/01/10

Description:

Curator of Rhagor (welsh for 'more'), the Virtual Museum from Amgueddfa Cymru - National Museum Wales

Website: <http://www.museumwales.ac.uk/rhagor>

Edit details >

48

LIVE ITEMS

88

FAVOURITES

7

FOLLOWERS

## Notifications



Your Item [17. Miner washing at home in tin bath](#) has been added to Ellen Davies's favourites



Your Item [12. Norwegian Church](#) has been added to Shahid Afsar's favourites



Boys' and Girls' Clubs of Wales is now following you



Your Trail [Ghosts of mines gone by](#) has been added to Peter's favourites



Your Trail [Heritage and Heather Trail. Big Pit, Blaenavon](#) has been added to Cardiff People First's favourites



Peter is now following you



Your Item [Three Cliffs Bay](#) has been added to Graham Davies's favourites



Ghosts of mines gone by (Trail)

Viewed 779 times

Top Viewed

Top Favourited

Top Commented

## Recent comments



Anonymous (not verified)

Reminds me of my childhood it's a lovely thing to look back on and show ...



[wmgibbs](#)

Rather surprised to find images of the Norwegian Church in Cardiff Bay o...



Anonymous (not verified)

this is now a route from aberbargoed to bargoed theres now a huge bridge...



CONTRIBUTE  
add your content

DISCOVER  
search, find, explore

LOCATE  
use maps to search



You are here: [Home](#) / [Graham Davies](#) / [Contribute](#)

My Profile

Contribute

Published Items

My Favourites

Contributors I Follow

File uploader

Close

Drag and drop your file here

Or select a file

Select Files

Uploading your content couldn't be easier

- 1 Find the files on your computer
- 2 Drag and drop them into the box
- 3 Once uploaded click "Create Item" where you will be able to add additional information to your files.

You are using the multi-file uploader. Problems? [Try the browser uploader instead](#)

Your files

Bulk Options



Title

Date Updated

Progress



Grahams New Trail (Trail)

7 months 1 week ago



Edit





# Casgliad y Werin Cymru People's Collection Wales

Cymraeg

Help ?

Welcome Graham Davies | Logout

88 Items In your favourites



CONTRIBUTE  
add your content

DISCOVER  
search, find, explore

LOCATE  
use maps to search



You are here : [Home](#) / [Locate](#)

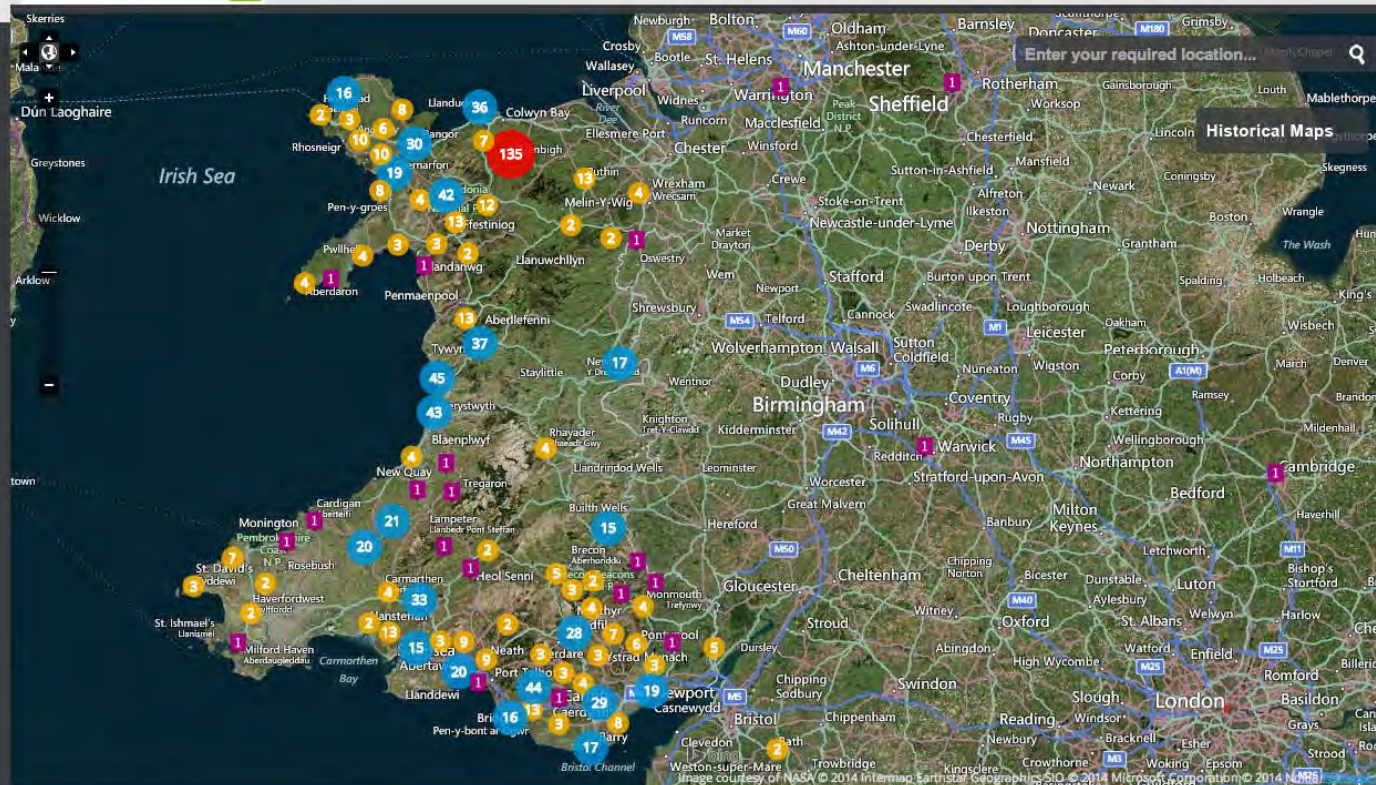
FILTER RESULTS:

Refine results by keyword



WHAT

WHEN



Lots of great new videos have been added to People's Collection including these from @MIDinbych <http://t.co/eLBsDV0V8A> — 2 hours 7 min ago

Next Steps

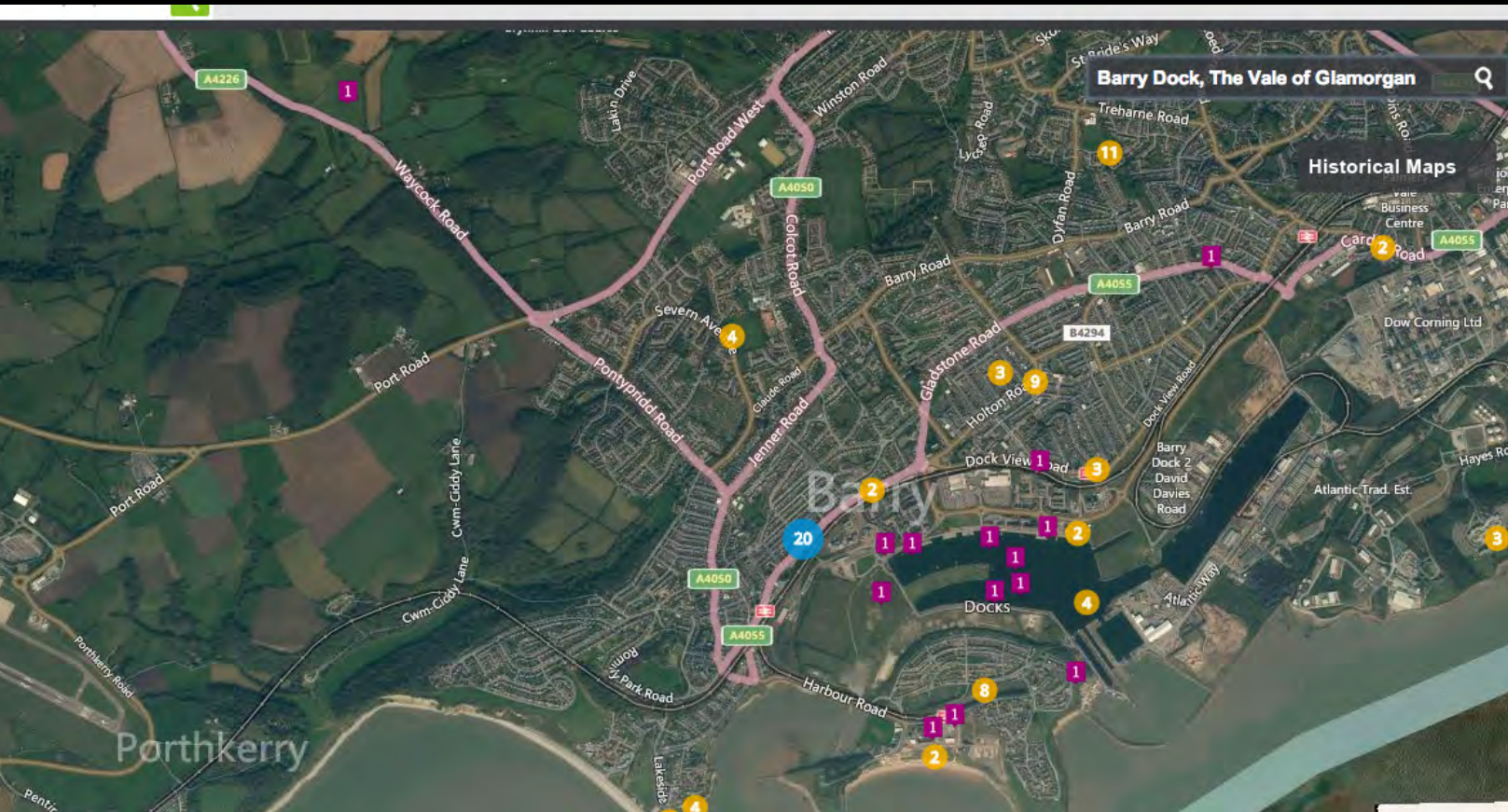
Share this site:



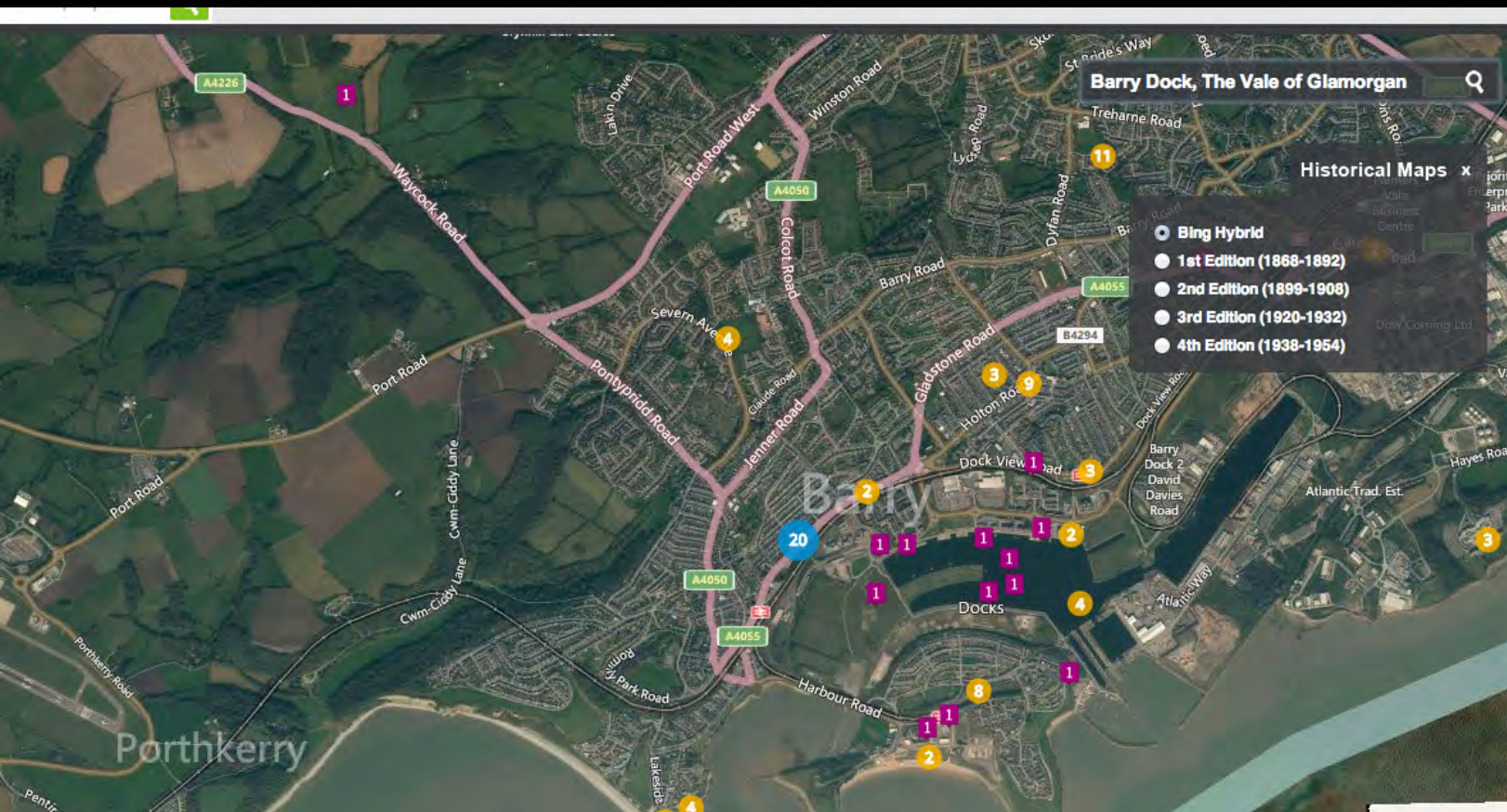
Digital Heritage Stations Help Centre



# Discover by location

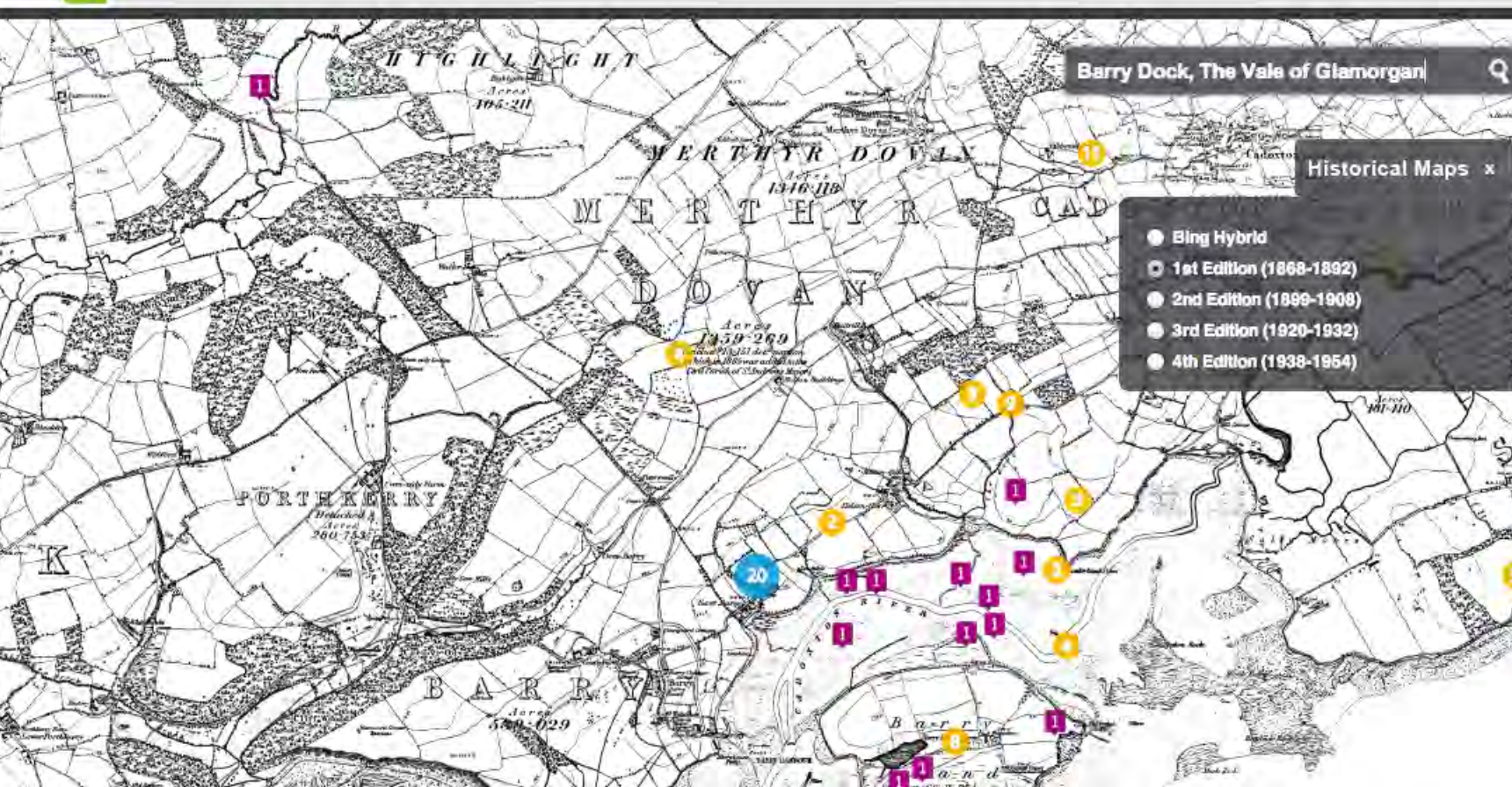


# Discover by location



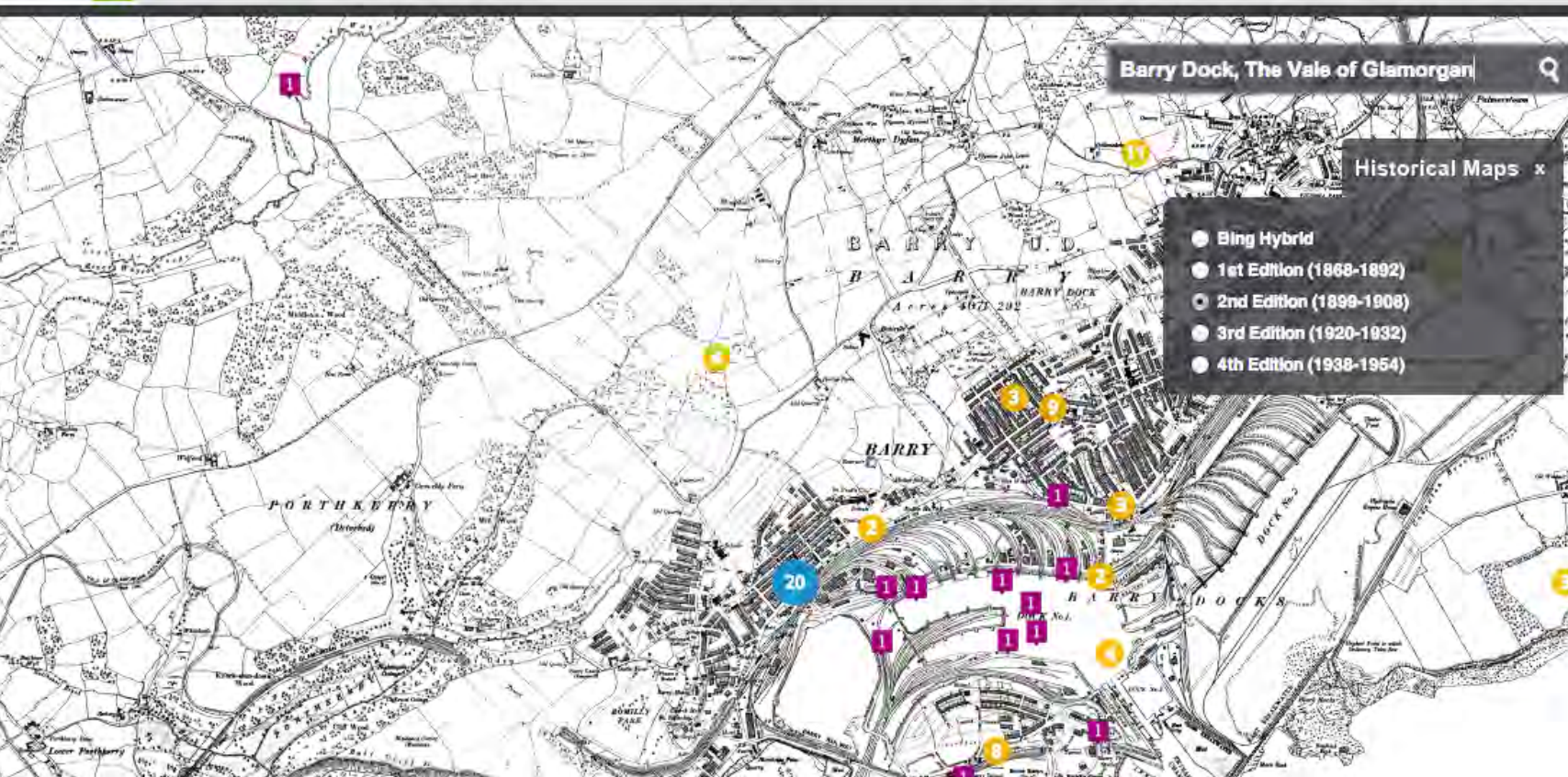


## Discover by location



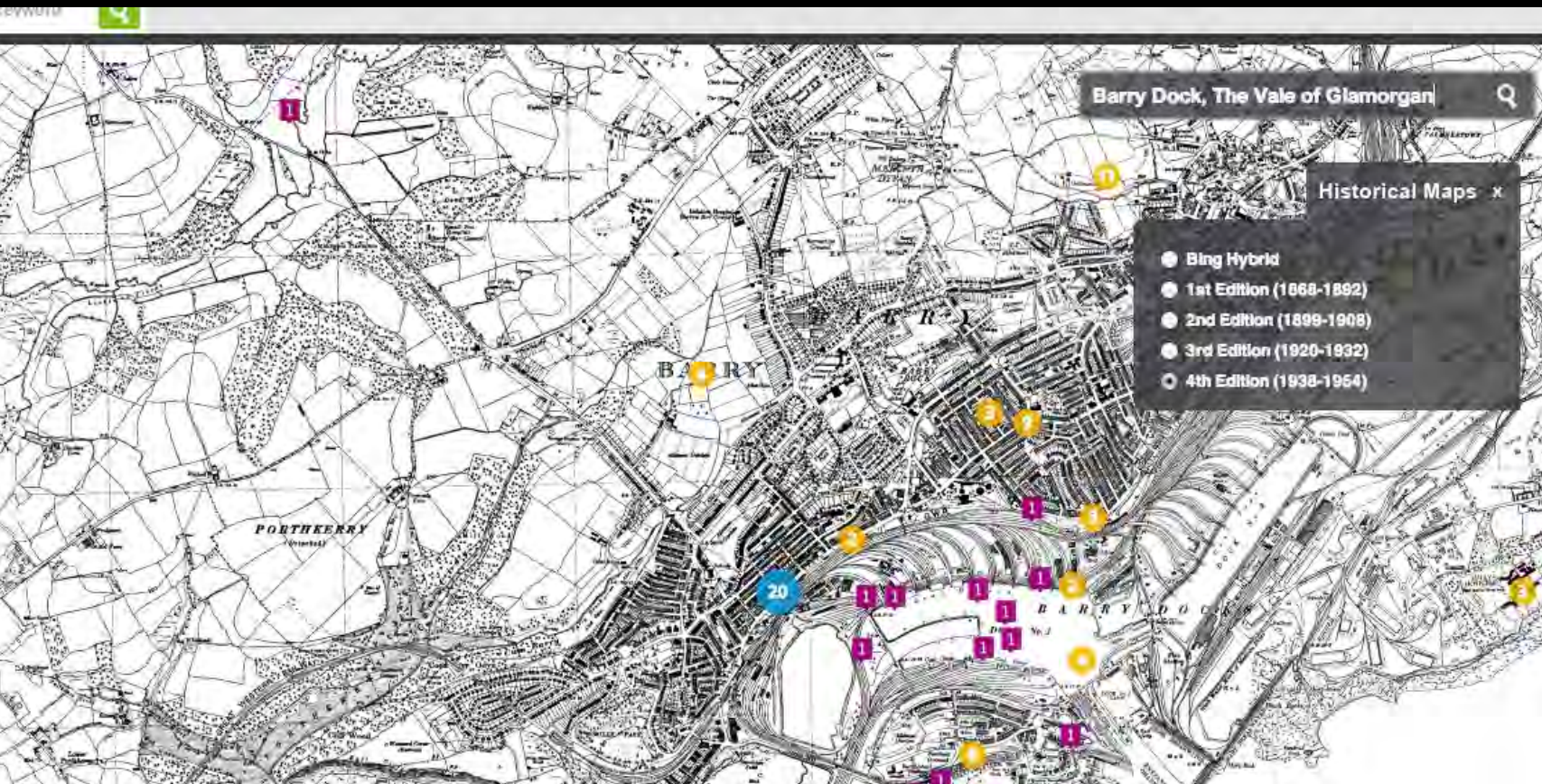


# Discover by location



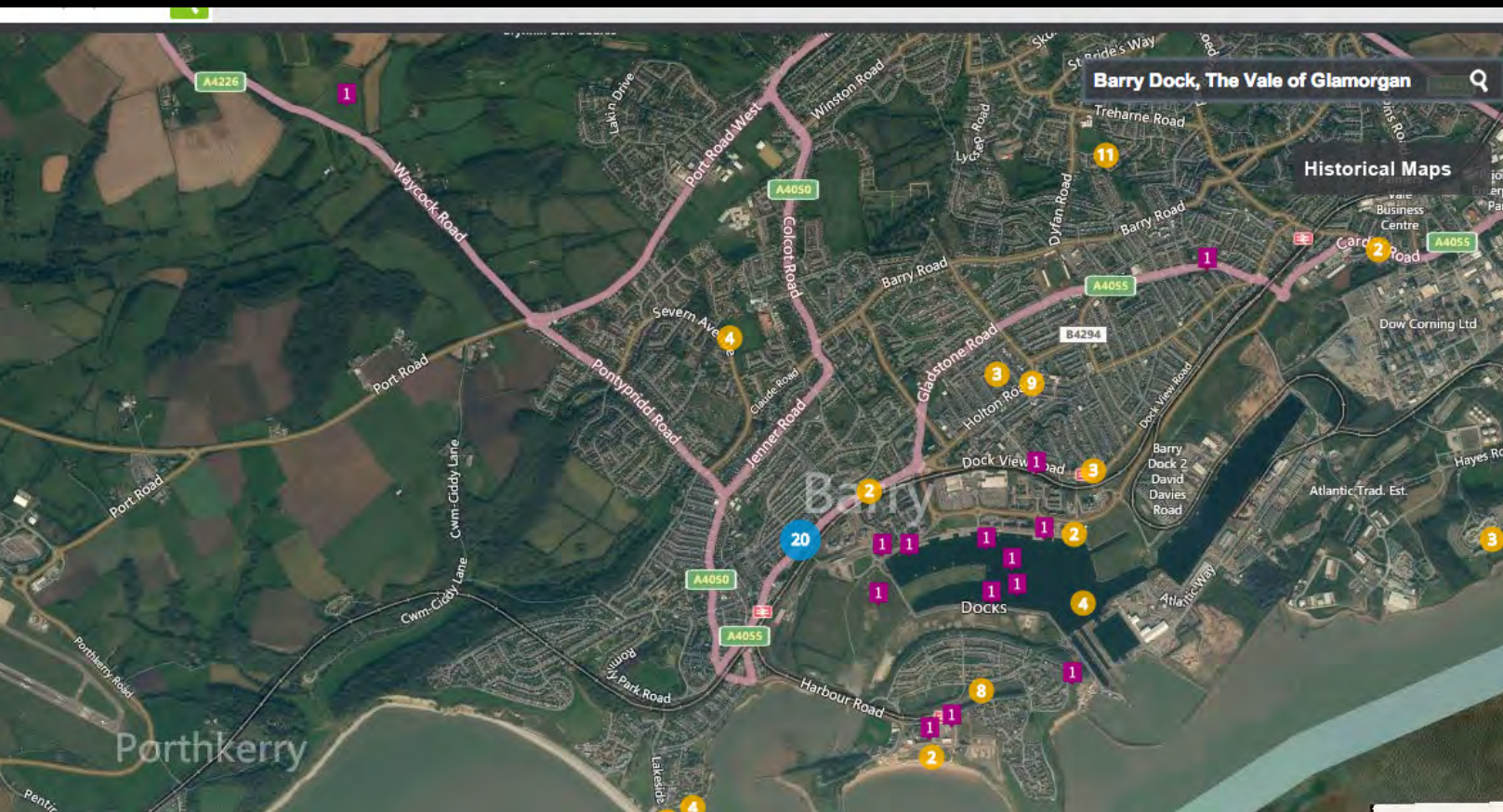


# Discover by location





# Discover by location







CONTRIBUTE  
add your content

DISCOVER  
search, find, explore

LOCATE  
use maps to search



You are here: [Home](#) / [View of Barry Dock in 2013](#)

## View of Barry Dock in 2013



[View map](#)



Edit This Item

Comment

Add to favourites

Share



Description

Comments (0)

Barry docks in 2013. One hundred years ago, this view would have been very different - 1913 saw the peak in British coal exports from these docks - 11m tons of coal

### Uploaded by



Graham Davies

Date joined:  
15/01/2010

Item uploaded: 25/07/2013

### TAGS

183



VIEWS

0



FAVOURITES

0



SHARES

0



COMMENTS

Creator: Unknown

Owner: graham davies

Report an issue

Request Takedown



Lots of great new videos have been added to People's Collection including these from @MIDinbych <http://t.co/eLBsDV0V8A> — 2 hours 7 min ago

### Next Steps

Digital Heritage Stations

Help Centre

Share this site:



Like what you see?

You are here : [Home](#) / [Barry Docks, 1932](#)

## Barry Docks, 1932



[View map](#)



### Uploaded by



Royal Commissio...

Date joined:  
24/07/2009

Follow

Item uploaded: 03/03/2011

### TAGS

coal depression Dock  
export Port Railway  
Shipping

374



VIEWS

0



FAVOURITES

12



SHARES

0



COMMENTS

Comment



Add to favourites



Share



Creator: Unknown

Owner: RCAHMW

Report an issue

Request Takedown



Description

Comments (0)

David Davies' ambitious Barry Docks and Railway scheme was completed in 1898; extensive railway sidings served coal hoists at the quaysides of the two main docks which between them enclosed over 45ha of water. The peak of the coal exporting trade was reached at Barry in 1913, when over 11 million tonnes of coal and coke passed through the port. This view of 3 June 1932 shows little activity in Dock No.2; in Dock No.1, seven ships are moored, possible victims of the economic depression of the time

# Community engagement





Thank you

graham.davies@museumwales.ac.uk  
@gd76

[www.peoplescollectionwales.co.uk](http://www.peoplescollectionwales.co.uk)